

SPREADER SOLUTION GUIDE.

Total  Control

 TOPCON

Proudly partnered with
Tabula & Precision Farming

 Tabula  PRECISION
FARMING

Spread according to plan

Spreading solution, controlled by Topcon Athene SM-1 ECU, provides accurate application control for virtually any spreader.

Including key features such as variable rate and data logging, as well as upgradeability with weight verification and digital farm management integration, the solution is configurable to meet the requirements of any operation.

Designed under ISOBUS protocol to reduce unnecessary costs and easily integrate, the solution provides ISO-UT compatibility for display flexibility. Modular, the solution can be easily enhanced with an optional load interface (via Topcon SL2) to provide weight verification, improving calibration and operation. Plus, when coupled with the Topcon Agriculture Platform (TAP), farmers can upload various data such as soil, yield, and as-applied to improve spreading decisions. Prescription maps can be created and sent directly to the cab through TAP and Topcon hardware.

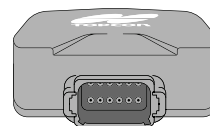
Guidance + Rate Control	
Computer controlled rate	✓
Mapping	✓
Proof of placement	✓
Boarder control	✓
Sectional control (90 degrees)	✓
ISOBUS capable	✓
Volumetric rate control	✓
Display Screen	✓
Tabula & Precision connection	✓

The Solution To Get You Going



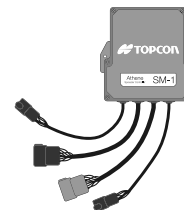
1

Console
X25, X35, XD
or ISO-UT
compatible display



2

Receiver
AGM-1 receiver for
versatile manual
guidance
or
AGS-2 receiver and
steering controller



3

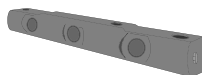
Controller
SM-1 as integrated
controller

Take Your Spreading to the Next Level

Additional Options



TAP & Data Transfer Devices
Store and share data on TAP. Proof of placement can be downloaded to TAP via modem USB or Wifi dongle on your phone.



Load Cells For Accurate Weight Measurement
Measures the weight of the product in the spreader. Compatible with a wide range of systems, ensuring seamless performance.

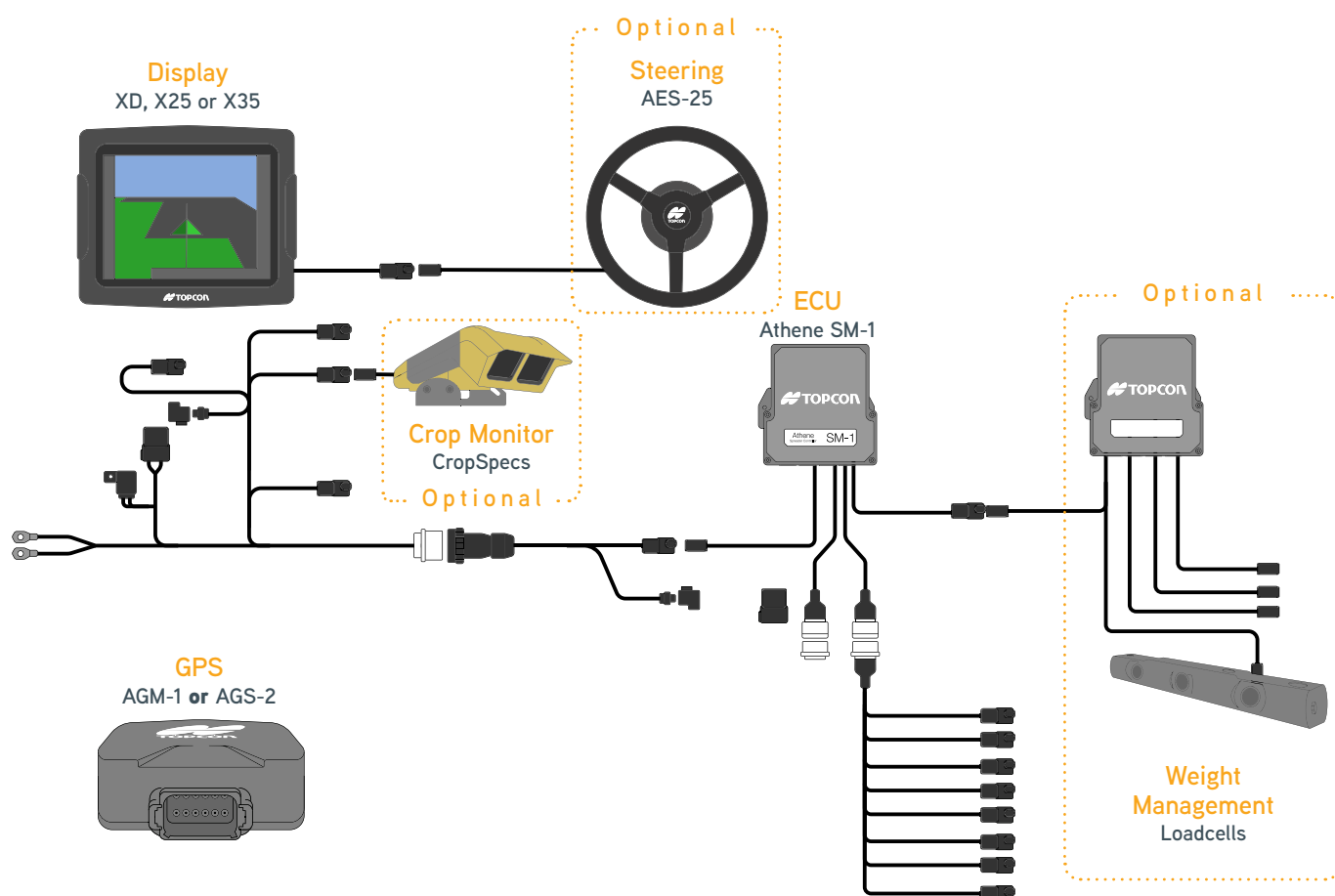


Automatic Guidance (Autosteering)
AES-25 to your System for the convenience of electric steering with quick, precise response and up to 2cm accuracy



Crop Health Monitoring (CropSpec)
Crop monitoring sensors for optimized application allowing for on-the-go treatment application

How it works



A Solution For Every Size Operation



Entry Level: XD Manual Guidance
Entry level manual guidance screen that can be unlocked for future features.
(AGM-1 receiver & XD 7" Touchscreen console)



Standard: X25 Manual Guidance
Most popular screen and is mostly unlocked for common applications.
(AGM-1 receiver & X25 8.3" Touchscreen console)



Premium: X35 Auto Guidance
Using the system for steering or going to in the future? The X35 AGS-2 kit is it as it has the required sensors for steering setup.
(AGS-2 Receiver & X35 8.3" Touchscreen console)

Supporting the sector
by driving great
outcomes for farmers

Tabula customer? Tabula's strengths of job management, health and safety, compliance processes and joins with Topcon's highly accurate placement, sophisticated spraying and spreading equipment and auto steering capabilities.

Precision Farming customer? Precision Farming strengths of Application for precise and dependable documentation, digital reporting for self-spreading, efficient fleet management and digital ordering and dispatch.

Contact Tony on **027 455 2272**, or visit **totalagcontrol.co.nz**
or pop in at 183 Alford Forest Road Allenton, Ashburton.

Total  Control